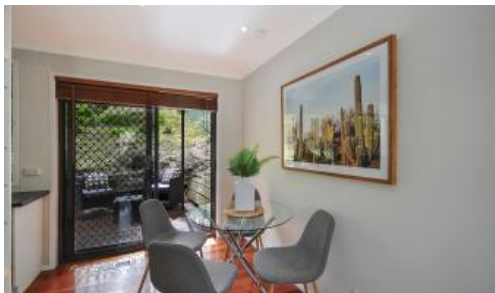




20 Strathearn Rd, Leura



## IMMACULATE HOME WITH TRANQUIL OUTLOOK!

Imagine weekend mornings with coffee and a magazine on the elevated deck while native birds serenade you from the surrounding gum trees. That is a real possibility in this attractive home which is just a short drive to the delights of Leura village.

Accommodation in the updated home comprises of:

- Central heating throughout - warms the house in a jiffy
- Comfortable living area with floor to ceiling glazing flowing onto a full length, timber deck
- Modern kitchen with gas cooking and adjacent meals area
- Contemporary bathroom with separate bath, shower and WC
- 3 bedrooms, main with built in robe
- Huge rear entertaining terrace perfect for entertaining during all seasons
- Delightful leafy outlook from almost every room
- Large lock up garage

Contact us to arrange an inspection.

6 months lease preferred.

No pets sorry.

3 1 1 1,517 m2

<b>Price</b>	\$390 pw
<b>Property Type</b>	Rental
<b>Property ID</b>	582
<b>Land Area</b>	1,517 m2

### Agent Details

Marc Fitzpatrick - 02 4784 1991  
Nikki Connors - 02 4784 1991

### Office Details

Blue Mountains  
206-208 Leura Mall Leura, NSW,  
2780 Australia  
02 4784 1991

**LIBERTY**

*The above information provided has been furnished to us by the vendor/s. We have not verified whether or not that information is accurate and do not have any belief in one way or the other in its accuracy. We do not accept any*

*responsibility to any person for its accuracy and do no more than pass it on. All interested parties should make and rely upon their own inquiries in order to determine whether or not this information is in fact accurate.*