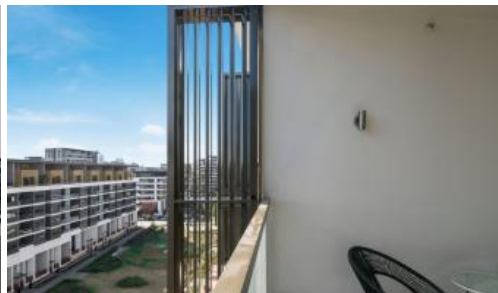


708, 8 Sam Sing St, Waterloo



## SUNNY & STUNNING IN 'VIKING'!

Situated in the highly sought after 'Viking' development, this immaculate home is ideal for investors and owner occupiers alike.

Located on level 7 and spread over a very spacious 76sqm, single level floorplan, features include:

- Large open plan living and dining areas with high ceilings and extensive use of glass
- Great sized balcony with distant glimpses of the City skyline
- Fantastic sized separate study with custom shelving
- Stunning island kitchen with polyurethane joinery, 40mm stone benchtop, gas cooking and dishwasher
- King sized bedroom with double built-in robes
- Chic bathroom with walk-in shower recess
- Internal laundry
- Ducted reverse cycle air conditioning
- External metal louvres

'Viking' also benefits from a lap pool, gym, on-site Building Management and excellent security.

All of this is located only 5 minutes walk to Danks Street's award winning eateries, Coles + Aldi Supermarkets and East Village shopping precinct. 10

1 1 1

**Price**

**Property Type**

**Property ID**

**Floor Area**

SOLD

Residential

581

76 m2

### Agent Details

Marc Fitzpatrick - 02 4784 1991

### Office Details

Waterloo

169-175 Phillip St Waterloo NSW

2017 Australia

02 8399 0340

**LIBERTY**

minutes walk will have you at Green Square train station.

Size: 76sqms

Strata levies: \$1,214.00 pq

Council rates: \$255.00 pq

Water rates: \$177.00 pq

*The above information provided has been furnished to us by the vendor/s. We have not verified whether or not that information is accurate and do not have any belief in one way or the other in its accuracy. We do not accept any responsibility to any person for its accuracy and do no more than pass it on. All interested parties should make and rely upon their own inquiries in order to determine whether or not this information is in fact accurate.*