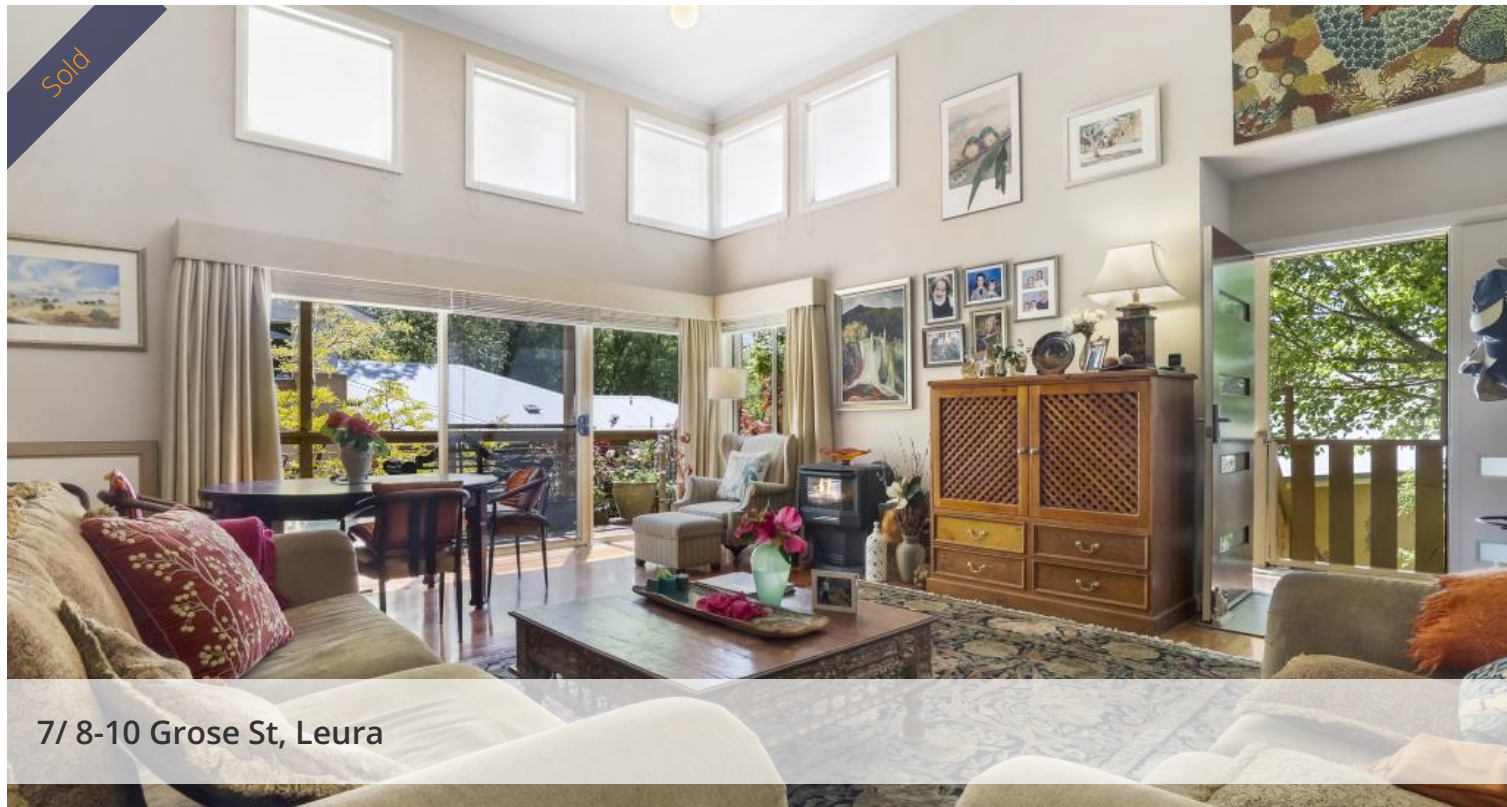


Sold



7/ 8-10 Grose St, Leura



COMFORT AND CONVENIENCE!

Welcome to the best location in Leura! Just 250m from your front door to Woolworths, 350m to Leura Mall and less than 600m to the Train Station.

This contemporary single level home is low-maintenance, full of architectural interest and has level access when entered via the garage!

Basking in northerly sun, accommodation comprises of:

- Spacious open plan living/dining with soaring ceilings, timber floors and gas fireplace
- Huge wrap-around north facing deck
- Modern kitchen with stone benchtops, double sink, dishwasher and gas cooking
- Large bathroom with separate shower & bath, window for natural ventilation
- Built-in robes in two of the bedrooms
- Internal laundry with extra WC
- Internal access to remote Lock-Up-Garage, pull-down ladder with storage
- Rear courtyard
- Solar panels

Other features include flyscreens throughout and good amounts of storage

Low-maintenance homes in this location with level access are a rarity. Don't

3 1 1 205 m2

Price SOLD for \$960,000
Property Type Residential
Property ID 1557
Land Area 205 m2

Agent Details

Marc Fitzpatrick - 0400 098 713
Raymond Farley - 0407 777 303

Office Details

Waterloo
169-175 Phillip St Waterloo NSW
2017 Australia
02 8399 0340

LIBERTY

miss out.

Total size: 205sqms

Council rates: \$297.90 pq

Water rates: \$150.99 pq

Strata levies: \$900.00 pq

Rental potential: \$600.00 per week

The above information provided has been furnished to us by the vendor/s. We have not verified whether or not that information is accurate and do not have any belief in one way or the other in its accuracy. We do not accept any responsibility to any person for its accuracy and do no more than pass it on. All interested parties should make and rely upon their own inquiries in order to determine whether or not this information is in fact accurate.