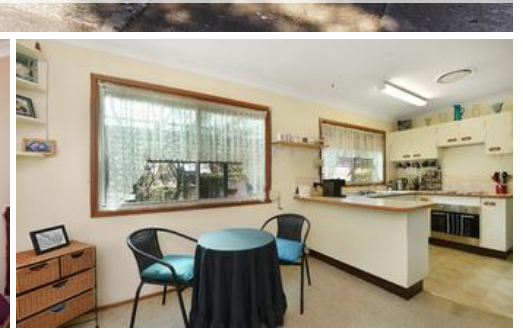




313 Great Western Hwy, Wentworth Falls



AFFORDABLE, CENTRAL + R2 ZONING!

Please read the bottom of this ad to view our current open for inspection procedures.

Get the lowdown.

Okay, yes it's on the highway but we're not talking Sydney traffic here. It's set back below road level and, conveniently, has a rear lane access. So, this sweet little 3 bedroom weatherboard cottage is a great first home. Or place to retire into. Or invest in. Or work from. Walk to the TAFE. Or the school. Or the legendary Mountain High Pies. Or the village. Or the station. Even to the lake. Such a convenient location!

Features include:

Roller shutters – great for keeping the heat in during winter and out in summer

The above information provided has been furnished to us by the vendor/s. We have not verified whether or not that information is accurate and do not have any belief in one way or the other in its accuracy. We do not accept any responsibility to any person for its accuracy and do no more than pass it on. All interested parties should make and rely upon their own inquiries in order to determine whether or not this information is in fact accurate.

🛏 3 🗺 1 🚗 1

Price \$490,000 - \$520,000
Property Type residential
Property ID 1370
Land Area 654 m2

Agent Details

Raymond Farley - 0407 777 303
Marc Fitzpatrick - 0400 098 713

Office Details

Waterloo
169-175 Phillip St Waterloo NSW
2017 Australia
02 8399 0340

